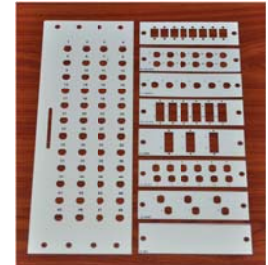


Fiber Distribution Box Wall Mount (OUTDOOR)

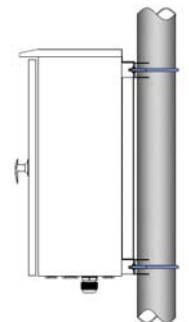


Snap-in Plate
Single Plate (TOT)

Wall-Mount Outdoor Fiber made of sheet steel 2 mm or stainless steel and powder coated 65 micron .They can compliant with IP55 or IP 65 standard. they can accommodate the fiber from 12-72 fiber . Cable entry 4 port use cable glands PG16 (1 inch) depend on cable dia. The cable can be held the preformed holes by a 2 section cable inlet or cable feed through grommet

Features / Benefits

- One door lockable
- Provided 4mm thickness foam for protection water and rustproof for body closure
- All screw or nut made of stainless steel
- Size: 380 mm x 413.5mm x 154mm
- Can Change one panel 48-72 port to snap-in plate 6 or 12 port
- Can support Adaptor fiber optic type to FC-D type, SC, ST, LC
- Can support splice tray 12 port maximum 5 ea
- 4 IN/ 4 OUT for cable entry dia:1 inch(Cable glands:PG16)
- Have L shape panel hole for lock cable entry and Out



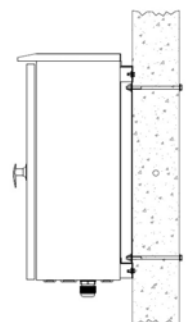
แบบซีด เสากลม



อุปกรณ์เสริม
สำหรับเสากลม



ทางสายเข้าและออก



เสาเหลี่ยม

Order Information

Type	Description
B1-WM48-OUT	48-72 Port Wall Mount Enclosure OUTDOOR

Note: for order : Splice tray, Sleeve protection, Pigtail, Snap-in plate, Single Plate(TOT)